

Overview

Joining Nasuni Filer to an Active Directory domain provides you with the ability to use Active Directory users and groups to manage access to data written to Nasuni Filer. This document guides you through the process of creating a share on Nasuni Filer and managing access to the share.

Assumptions

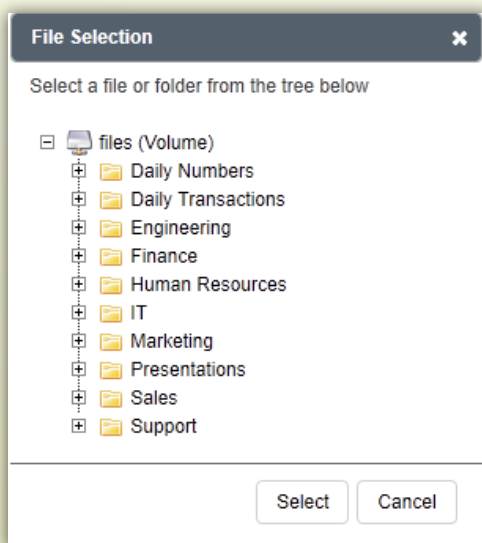
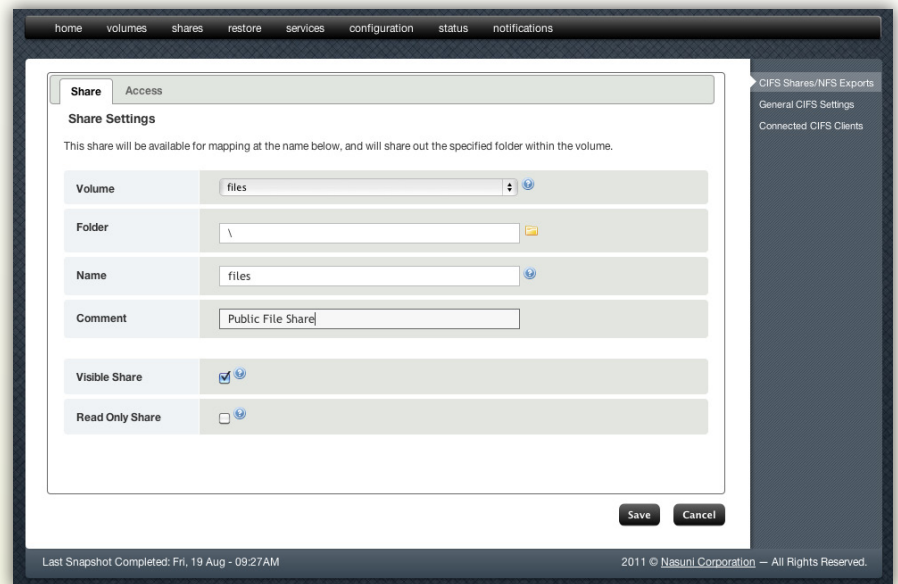
This document assumes you have joined Nasuni Filer to Active Directory and written data to a Nasuni Filer volume.

Expected Time to Test: 1 Hour

Adding a Share to a Volume

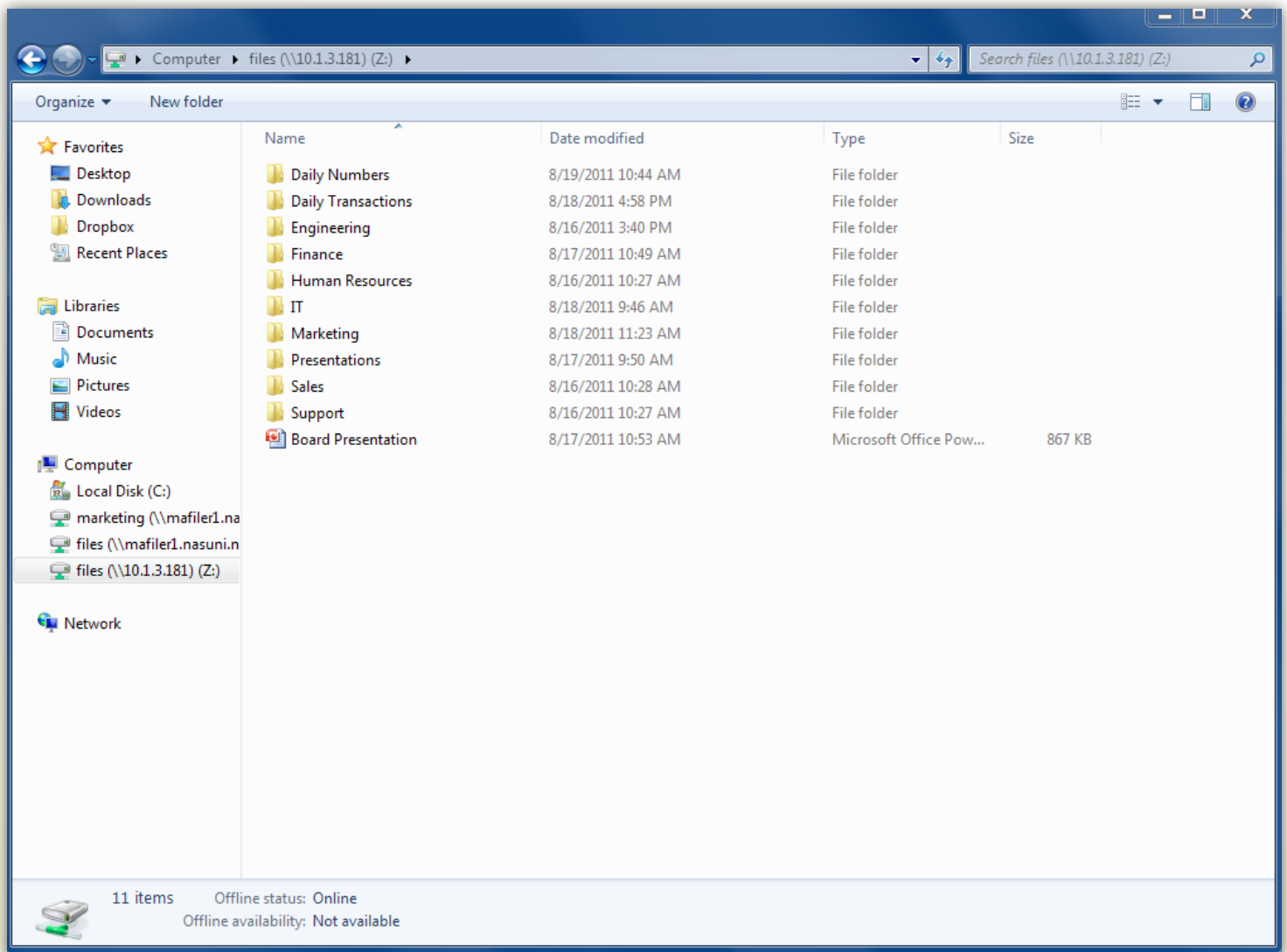
To add a share to a volume:

1. Click the **shares** page.
2. Click **Add New Share**.
3. Select the volume from which you want to share data in the drop-down list.
4. Click the folder icon next to the **Folder** box



5. Select the folder in the volume you want to share and click **Select**.
6. Click **Save** in the lower left hand corner of the page.

7. Connect to the share created from a Windows client joined to the Active Directory in Nasuni Filer. Users and groups in the Active Directory have access to the share based on the NTFS permissions of the shared folder.

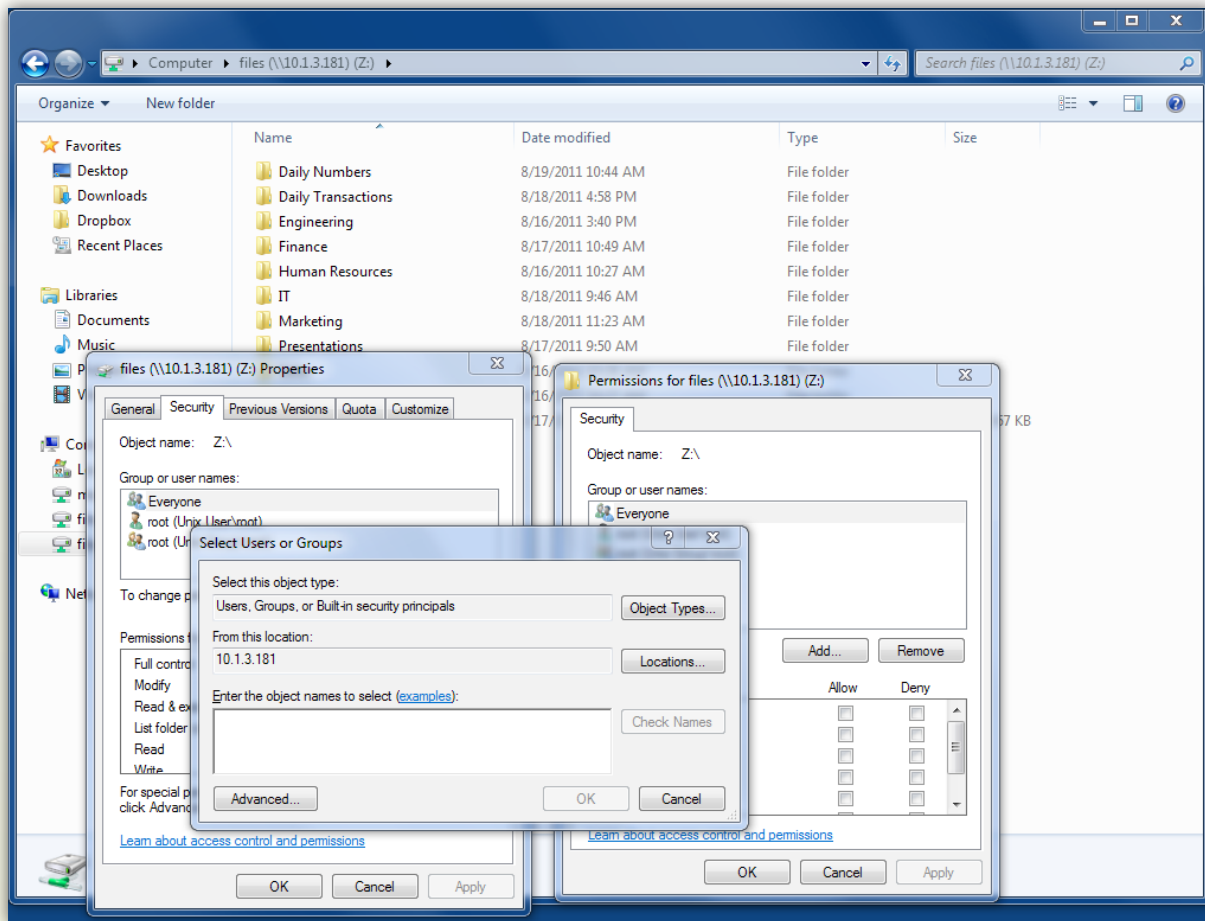


Note: Additional share access control is available. These share access levels interact with the NTFS permissions set on the shared folder to determine access to a share. Nasuni recommends using NTFS permissions and not share access levels to control share access.

Configuring User and Group Access with NTFS Permissions

To configure NTFS permissions:

1. Right-click on a shared folder and select **Properties**.



2. Click **Security**.
3. Click **Edit** and then click **Add**.
4. Add a partial or full username or group name and click **Check names**.
5. Click **OK**.
6. Choose the permission levels for this user or group and click **Apply**.

Conclusion

This document helps you understand how to share data written to a Nasuni Filer joined to an Active Directory Domain. Access to data managed with the Nasuni Filer should be consistent with your organization's security policies.

If you have other questions about the performance of the Nasuni Filer, or how it can benefit your organization, visit www.nasuni.com or contact the Product Evaluation Team at (800) 208-3418.